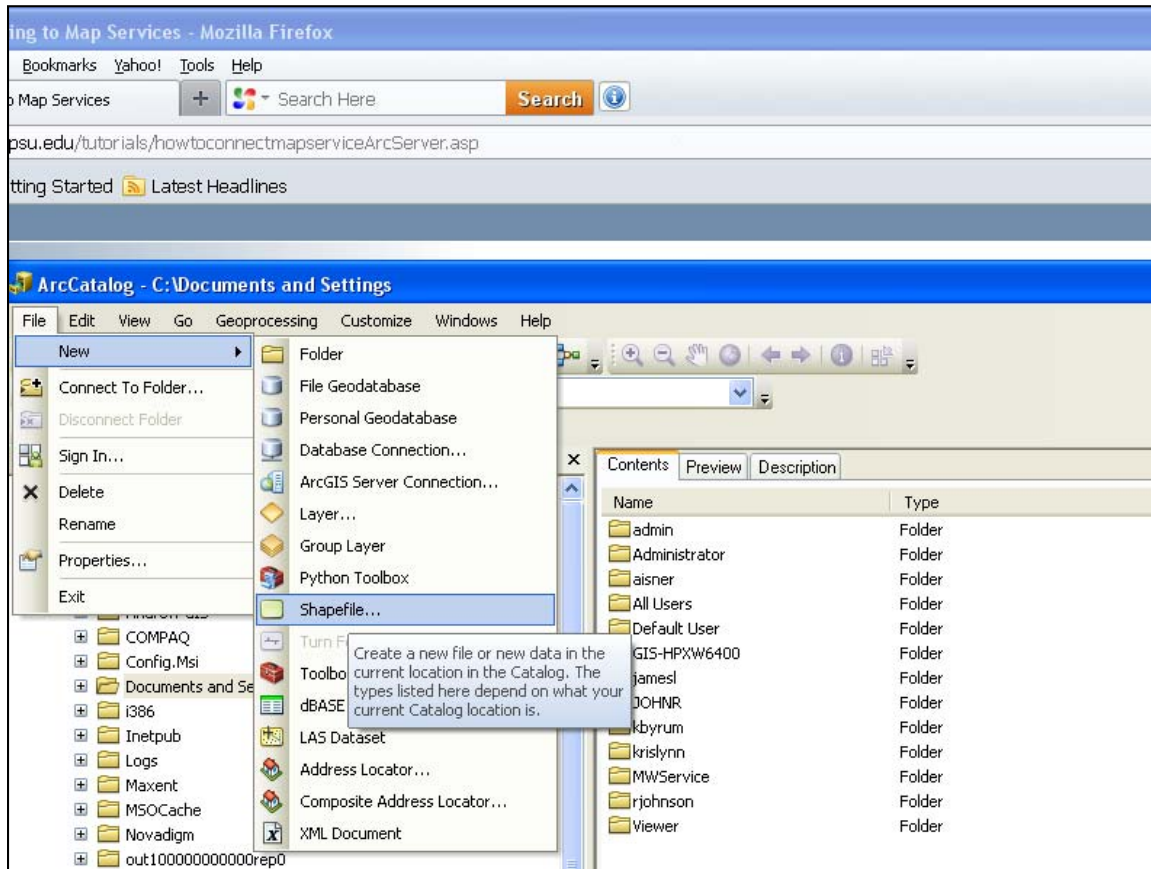


## iGIS Tutorial

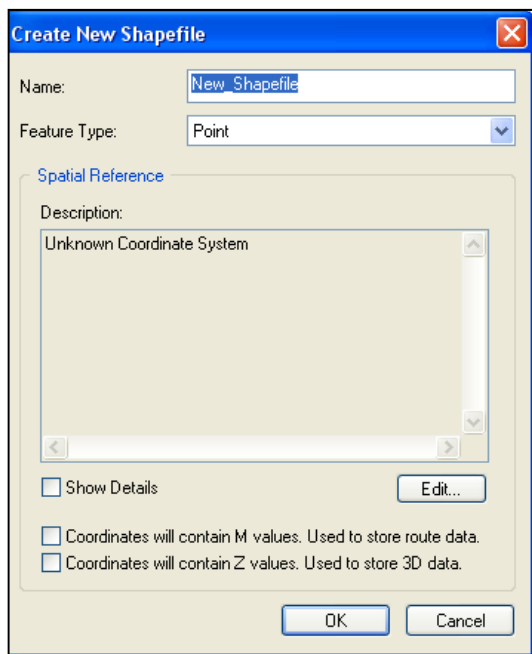
### How to create project specific GIS datasets using ESRI ArcGIS software

In this tutorial you will learn how to create GIS shapefiles in ArcCatalog for use in iGIS

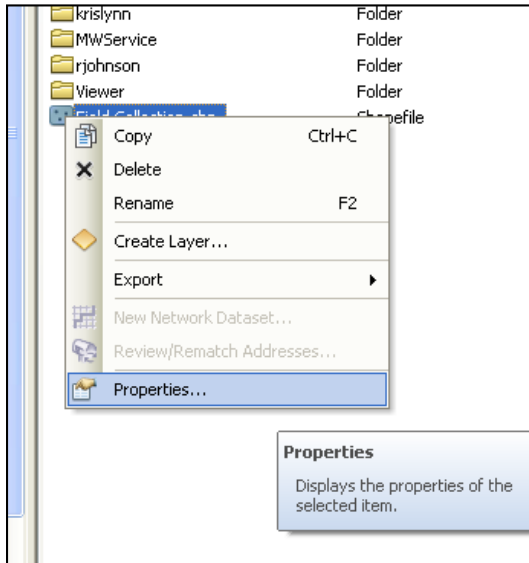
**Step 1.** Open ArcCatalog and go to File Tab select New → Shapefile



**Step 2.** Assign shapefile name feature type (Point, Line, Polygon), and Coordinate System click OK.



**Step 3.** Right click the newly created shapefile and open the properties menu.



**Step 3 continued.** In the shapefile's properties select the Fields tab to add or remove attributes to the shapefile's database table. Attributes can be added or removed within the attribute table in ArcMap and ArcCatalog so this operation can be completed later if wanted.

